

# Sarawak Resource Management (SRM)

## Introduction to Sarawak Resource Management

- PETROS is dedicated to progressing the long-term growth of Sarawak's oil and gas value chain by realising the long-term potential of Carbon Capture, Utilisation and Storage (CCUS).
- Sarawak Resource Management (SRM) is tasked to support the roles of PETROS as the Resource Manager for Sarawak's CCUS and Onshore Regulator. PETROS aspires to become the preferred regional low-carbon solutions provider, establishing Sarawak as the CCUS heartland in Asia Pacific. By managing Sarawak's carbon capture and storage resources, SRM seeks to advance technical innovation, economic progress and environmental responsibility.

## SRM supports PETROS to Uphold & Execute Mandate by Sarawak Government and PETROS Board

**Sarawak Resource Management (SRM)**

=

**Petroleum Management**

+

**Carbon Management**

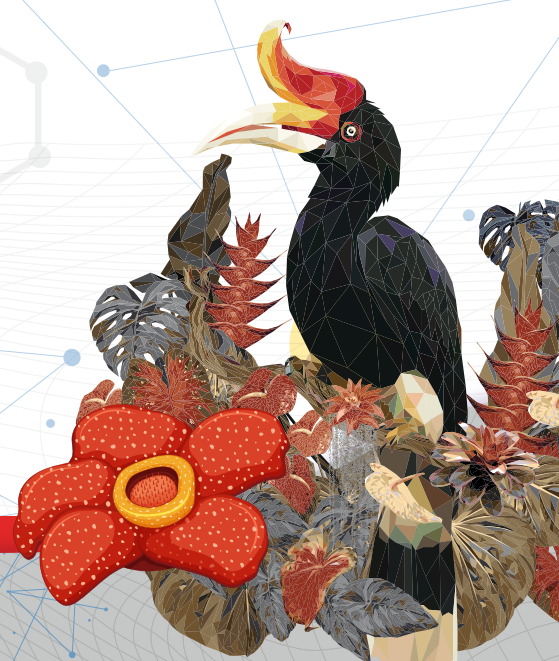
## Our Roles

### Regulatory & Governance

- Policy Development
- Licensing & Permitting
- Monitoring & Enforcement
- Environmental Protection/HSSE
- Stakeholder Engagement

### Resource Manager

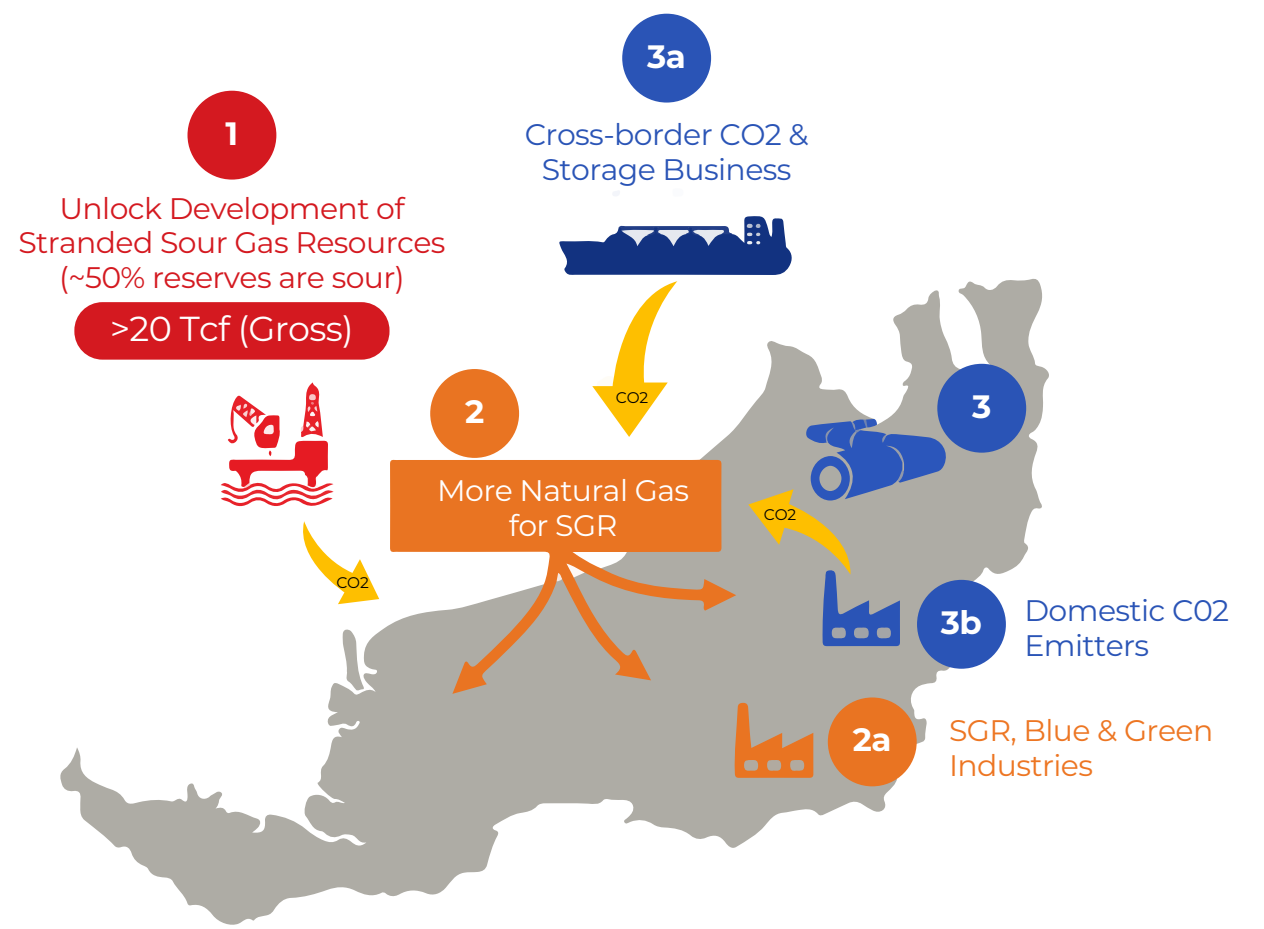
- Exploration, Development & Production Decommission
- Low-Carbon Solution
- Resources Planning & Allocation
- Contract Management
- Collaboration & Partnership
- Royalties & Revenue Management
- Sarawak Local Content



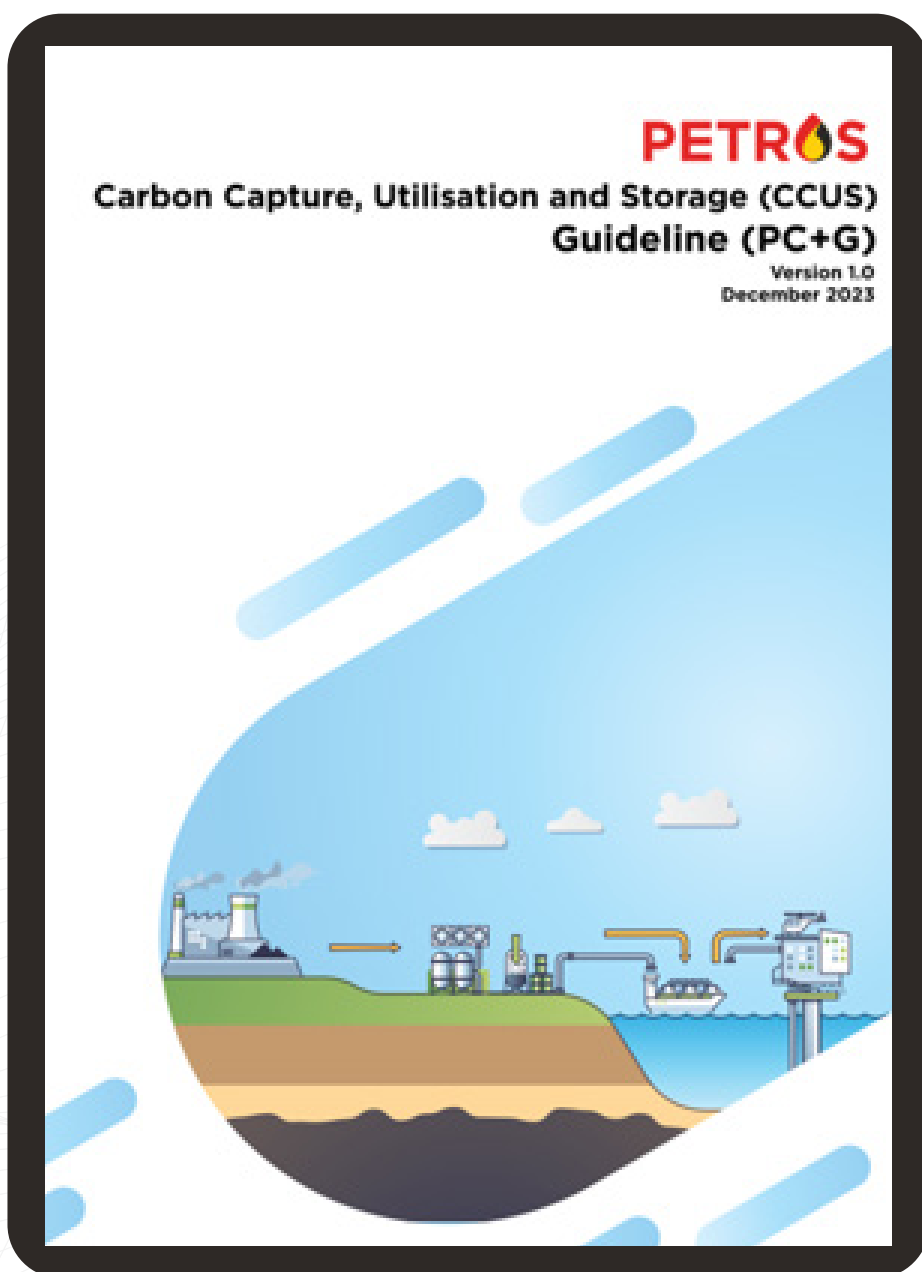
# Sarawak CCUS 3 Strategies Value Drivers

Realising the long-term total potential of CCUS Value Chain and establishing Sarawak as the CCUS Heartland in Asia Pacific

- 1** Creation of CCUS Value Chain - starting with unlocking the stranded high CO<sub>2</sub> gas reserves and attracting manufacturing FDI.
- 2** Long-term clean energy & gas supply security to fuel energy transition & socio-economic growth.
- 3** Sarawak capability & CCUS Centre-of-Excellence - generating high value jobs & business opportunities.

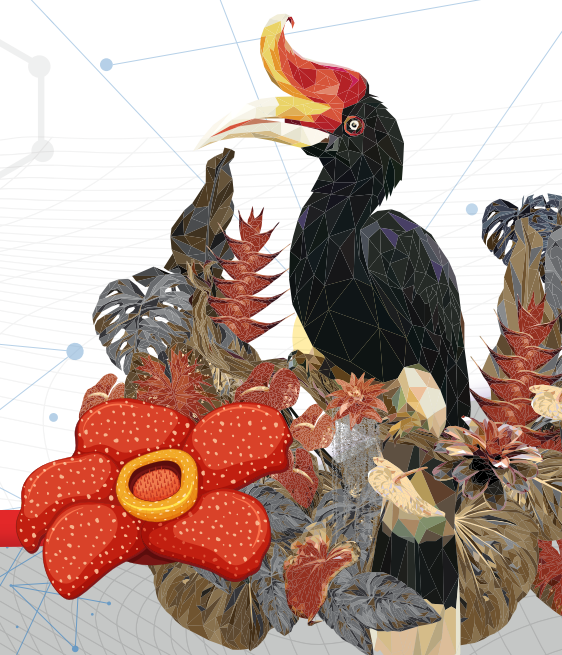


## PETROS CCUS Guidelines (PC+G)

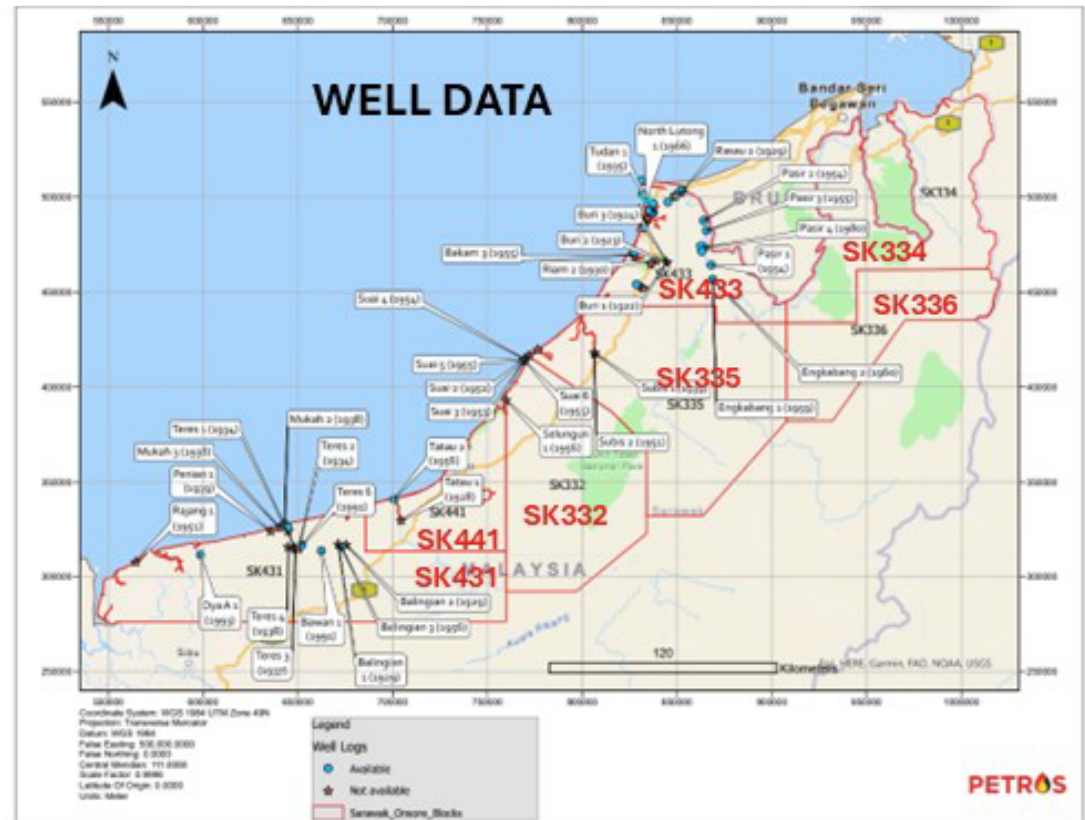
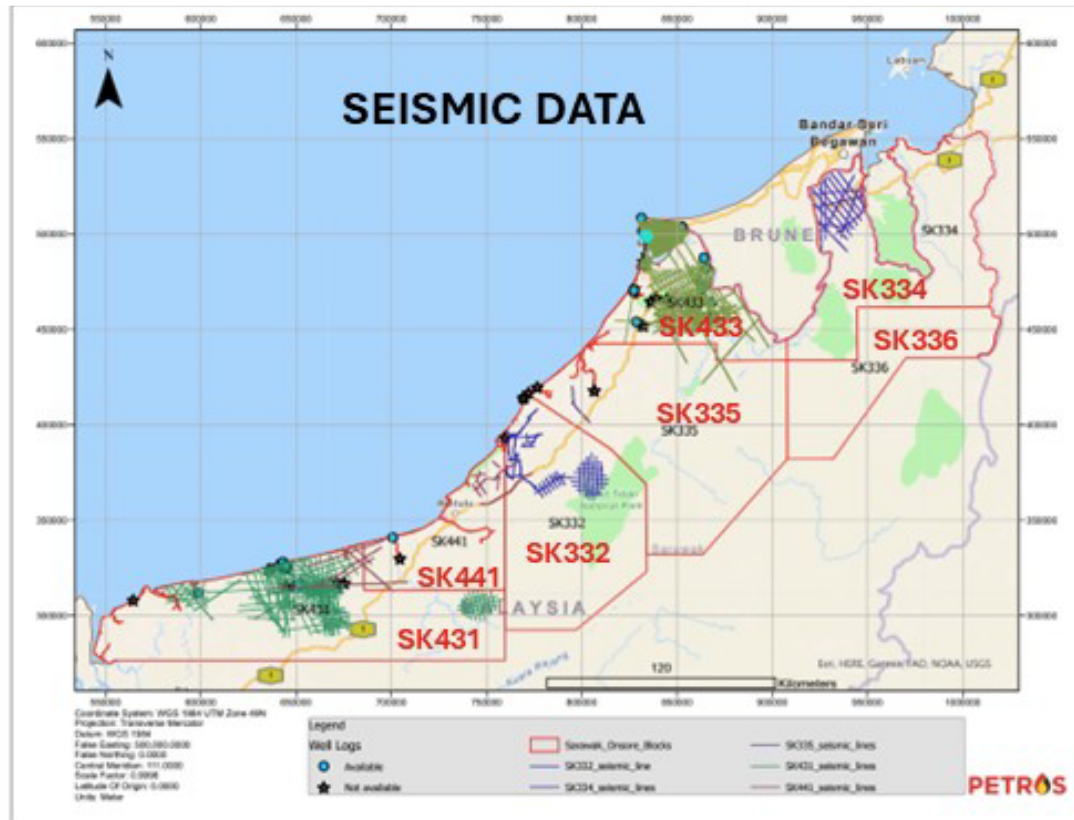


### Objectives

- Acts as guiding documents for managing CCUS operations in Sarawak.
- Establish regulatory frameworks aligned with international standards to ensure legal and ethical compliance, business continuity, and a licence-to-operate. Promote ethical decisions and practices in environmental, social governance, and HSSE considerations.
- Enhancing the development of CCUS industry by adding value, fostering industry growth, contributing to Sarawak's financial resources, and creating opportunities for local vendors and residents.
- Cultivating a culture of care and responsible behavior to ensure a healthy and safe work environment, prioritising the well-being of individuals, assets, and the environment.
- Systematically identifying, analysing, and mitigating risks through the Storage Decision Gate process to ensure safe and timely project delivery, instilling a culture of continuous improvement.



# Sarawak Onshore Data Availability



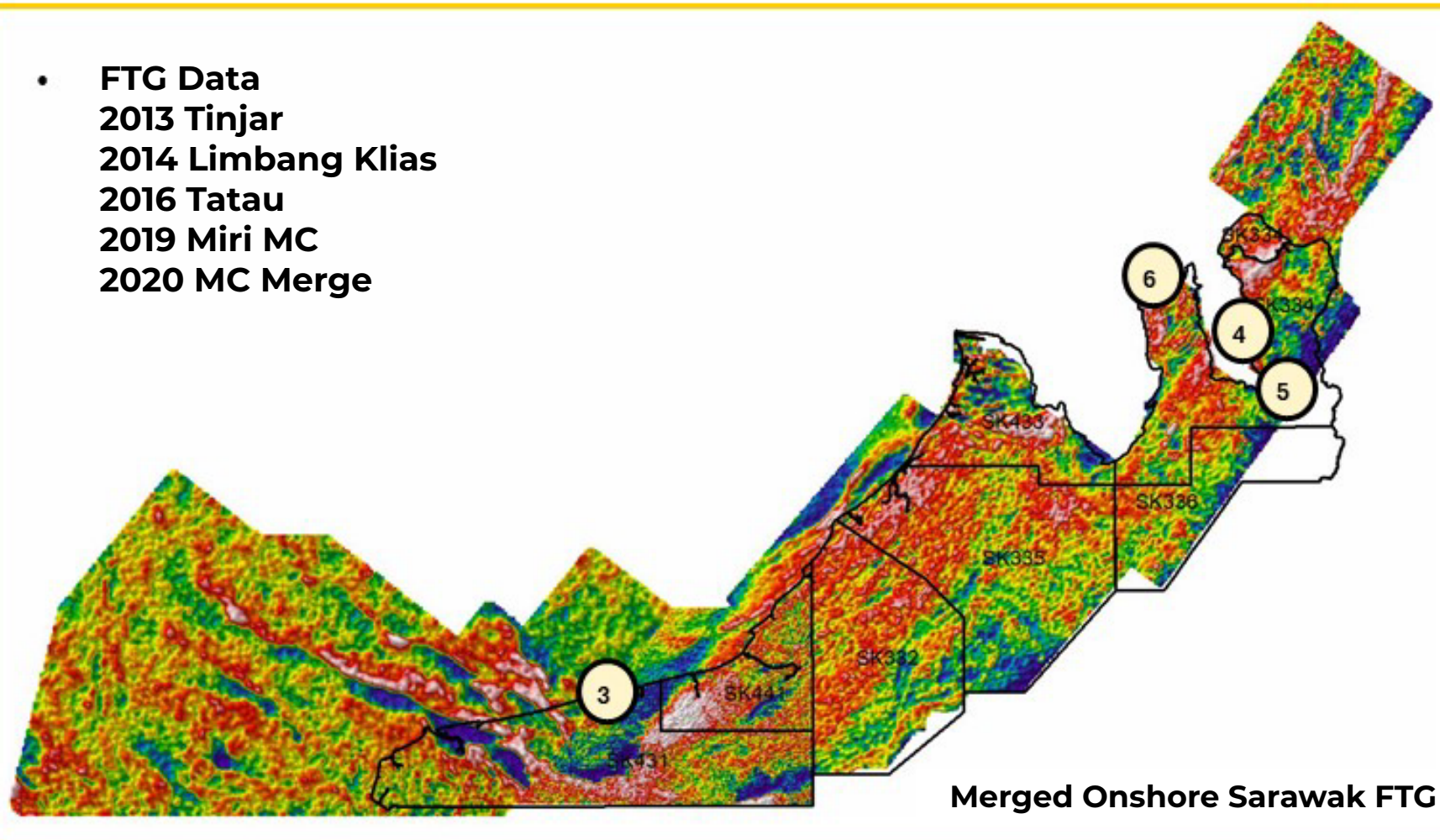
Onshore Block	Area km2
SK433	3766.47
SK431	9147.15
SK336	4134.84
SK334	6654.77
SK332	9244.97
SK335	7136.46
SK441	3256.46
Total	43341.12

**Well Onshore:** 70\*\* (Exploration & Appraisal well).  
**Seismic Total 2D onshore =** 11,642.7 km  
**Total 3D onshore =** 186 km2 (only 1 3D survey located in SK433 Block)

\*\* exclude 600+ Miri legacy wells

# Sarawak Onshore FTG Coverage & Latest PETROS C&G Studies

- **FTG Data**  
 2013 Tinjar  
 2014 Limbang Klias  
 2016 Tatau  
 2019 Miri MC  
 2020 MC Merge

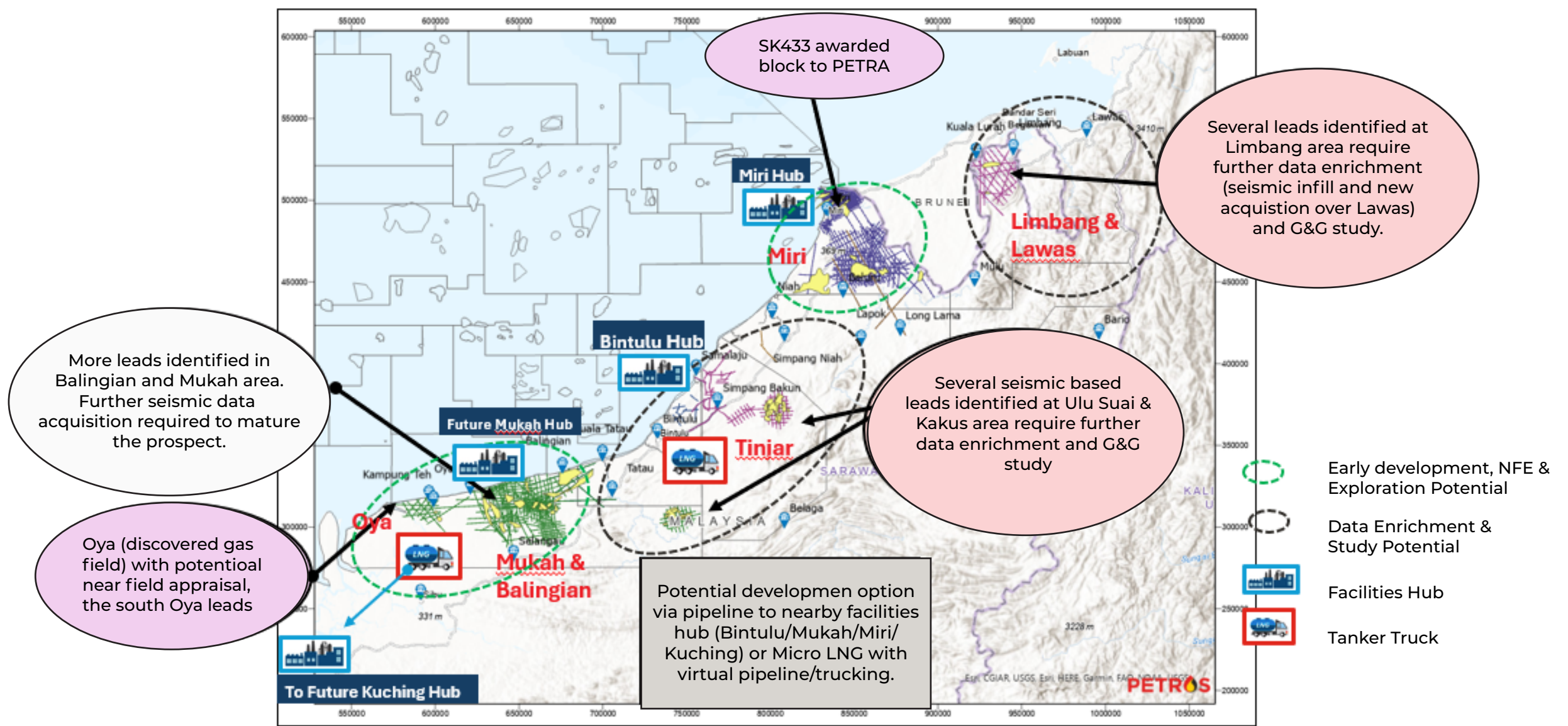


## PETROS G&G Studies since 2022

1. Sarawak Onshore FTG & Regional Study 2022-2023 (Regional).
2. Evaluation of Onshore Yet-To-Find Volumetric Assessment 2023 (Regional).
3. Mukah-Balingian-Bintulu Geological Field Works & Rock Sample Lab Analysis 2023.
4. SK334 Joint Technical Study 2022-2023.
5. Limbang-Lawas Geological Field Work & Rock Sample Lab Analysis 2024.
6. Limbang Seismic Reprocessing 2024.

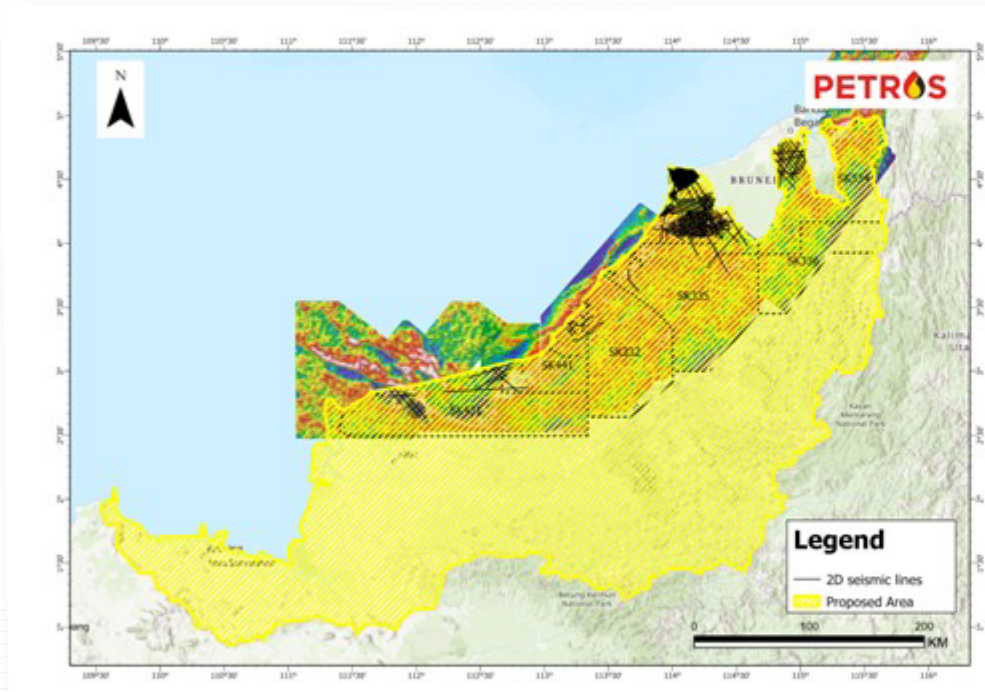


# Sarawak Onshore Prospectivity Insight



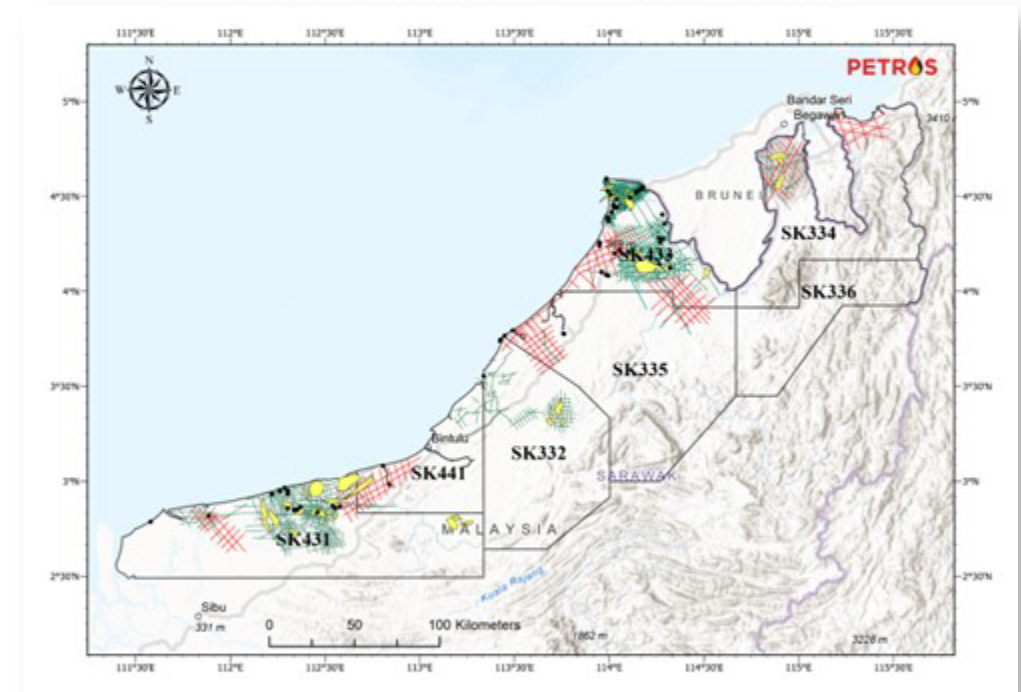
# Sarawak Onshore Data Enrichment Plan 2024-2029

## Enhanced FTG



- Enhanced Full Tensor Gravity (E-FTG) for entire Sarawak Onshore approximately 137,000 sqkm in 2025.
- Combine with G&G studies such as field work and rock sample lab analysis.

## Seismic Acquisition & Processing



- New 2D Seismic Acquisition & Processing of approximately 2000km seismic data in 2026 onwards.
- Seismic Reprocessing of Legacy 2D data approximately 7000km has started in 2024.

